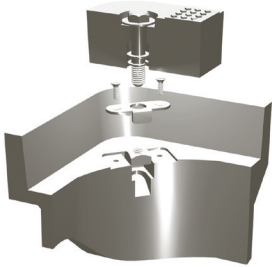


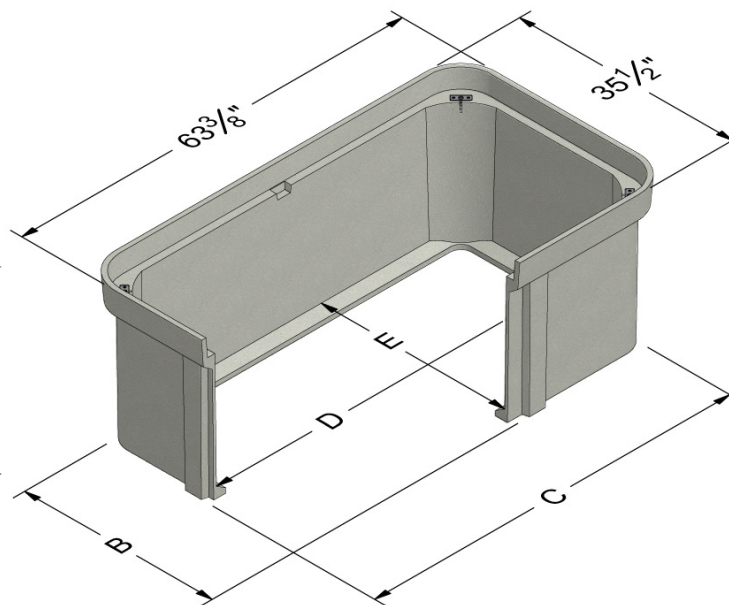
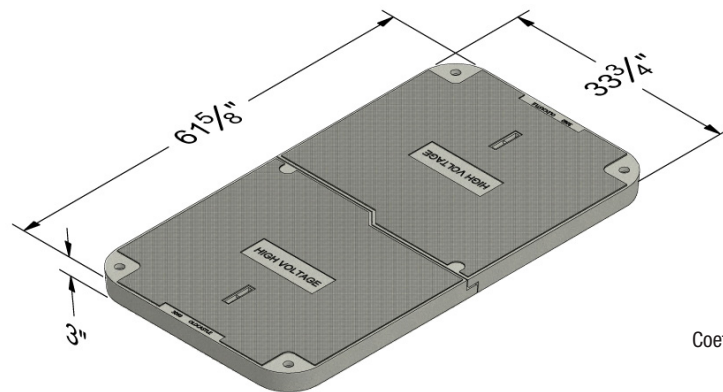
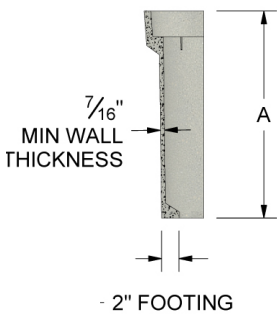
3060



Bolt Down Detail



Lifting Strap Detail



	A	B	C	D	E
3060-24	24	33-3/8	61-1/4	58-7/16	30-9/16
3060-30	30	33-1/4	61-1/8	58-5/16	30-7/16
3060-36	36	33-1/16	60-15/16	58-3/16	30-5/16

COVER:

Style:	Flush (2 Piece) Uni-Half
Material:	Polymer Concrete
Model:	30" x 60"
Weight:	Tier 15: 205 lbs (per half) Tier 22: 231 lbs (per half)
Std. Fasteners:	1/2-13 Stainless Steel Hex Head Bolt, Washer and Floating Nut
Options:	Logos and Special Markings
Surface:	Slip Resistant & Marked*
Coefficient of Friction:	>0.6 ASTM 1028
Performance:	ANSI/SCTE-77 Tier 15, WUC 3.6 ASTM C857 A-12 ANSI/SCTE-77 Tier 22, WUC 3.6, ASTM C857 A-16

BODY:

Material:	Polymer Concrete
Model:	30" x 60"
Weight:	24" Depth: 325 lbs 30" Depth: 367 lbs 36" Depth: 409 lbs
Wall Type:	Straight
Performance:	ANSI/SCTE-77 Tier 22, WUC 3.6, ASTM C857 A-16



Medium Duty:
Non-deliberate Traffic



Heavy Duty: Incidental,
Non-deliberate Traffic

For use in non-vehicular traffic situations only.

* Cover comes standard with permanent markings for manufacturer, load rating, model size and manufacturing location.

Contact your Oldcastle Enclosure Solutions Distribution Center for specific information and additional options.

Actual load rating is determined by the box and cover combination. Weights and dimensions may vary slightly.

Rev 12/2016 ©2016 Oldcastle, Inc.

3060

Options:

Available Polymer Covers:

Flush (2 Piece) Uni-Half (Standard)

Fastener Options for Polymer Covers:

Penta Head Bolt
Oldcastle Enclosures Vandal Resistant Bolt
Penta Coil Thread Bolt
Captive Bolt Retainer

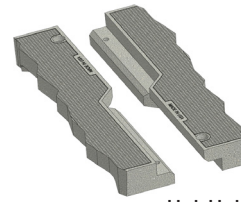
Custom Options for Polymer Covers:

4" x 8" Plate with Custom Markings

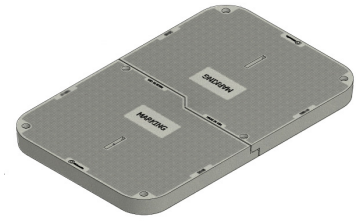
Add on Options:

EMS Marker (E)
Mouseholes/Knockouts
Rack Mount (A)
Cable Racks/Cable Arms (B)
Unistrut (C)
Pulling Eye - 1,000 lb and 3,000 lb (D)
Ground Buss (F)
Dividers
Racking Provision
Lid Gaskets*
Solid Bottom
Bodies are Stackable (with tallest body on bottom)

*Lid Gaskets inhibit water flow into the box, they do not make Enclosure fully waterproof.



Uni-Half Detail



Uni-Half Cover



Hex Head



Penta Head



Vandal
Resistant



A



B



C



D



E



F

**Raw Material
Specifications:**

Standard Test Method	Properties of Raw Material	ASTM Designation	Typical Value
Compressive Strength of Polymer Concretes	Compressive Strength	C 579	> 11,000 psi
Flexural Properties of Plastic Materials	Flexural Strength	D 790	> 3,000 psi
Resistance of Plastics to Chemical Reagents	Chemical Resistance	D 543	Retain > 75% of original strength
Impact Resistance by Means of a Falling Weight	Impact Resistance	D 2444	> 70 ft-lb
Static Coefficient of Friction	Friction Coefficient	C 1028	> 0.6

ASTM Specifications shall be the current revision

Test Reports available on request

The Rural Utility Service (RUS) is a department of the US Department of Agriculture organized to facilitate rural developments. You will find Oldcastle Enclosure Solutions brand enclosures listed by the RUS. All Oldcastle Enclosure Solutions brand enclosures conform to the RUS "Tamper Resistant" fastener design for buried pedestals.

**Product Load
Rating:**



Medium Duty or Heavy Duty : Incidental, Non-deliberate Traffic

For use in non-vehicular traffic situations only.

Note:

Actual load rating is determined by the box and cover combination. Weights and dimensions may vary slightly

All information contained on this sheet is current at the time of printing.

Oldcastle Precast, Inc. reserves the right to discontinue or update product information without notice.



Rev 12/2016 ©2016 Oldcastle, Inc.